

# WinnForum Facility Overview

**Ken Dingman (L3Harris Corporation)**



Slide 1



# Agenda

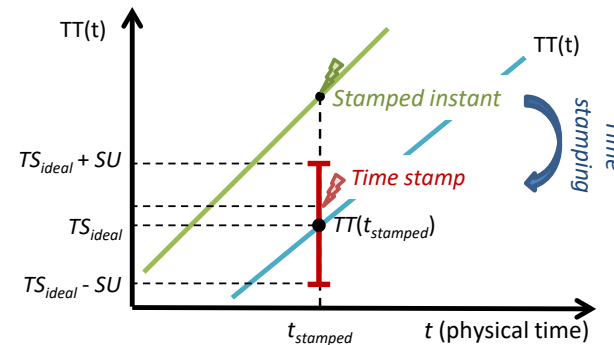
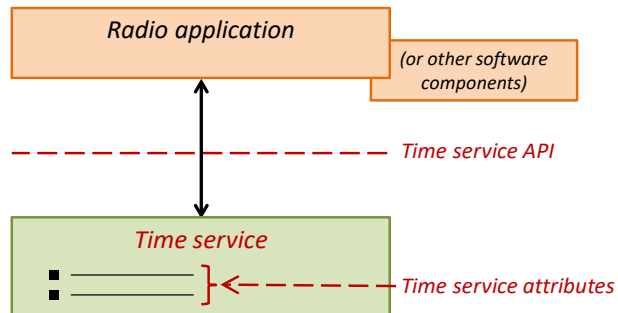
**The PIM (Platform Independent Model) Specification**

**The PSM (Platform Specific Model) Specifications**

# PIM and PSMs

## Platform Independent Model defines the concepts supported.

- No specifics about language or implementation.
- Interfaces, semantics / behavior and flows are discussed
- The PIM forms the interoperable heart of the standard



## Platform Specific Models define real implementations

- Native language implementations in C and C++
- Framework w. middleware (SCA / CORBA, DDS, etc. possible)
- FPGA implementations in VHDL

# PSM Specifications Overview

## Planned PSM Specs

- Native C++
- FPGA
- SCA / CORBA

## Possible other PSM Specs

- Native C
- Other IDL-based component frameworks, e.g. Redhawk
- SOSA / DDS, etc.. ?

**User-specific PSMs will be possible, although discouraged from portability standpoint**